

# GODREJ INFINITY

KESHAVNAGAR, PUNE

IN PARTNERSHIP WITH

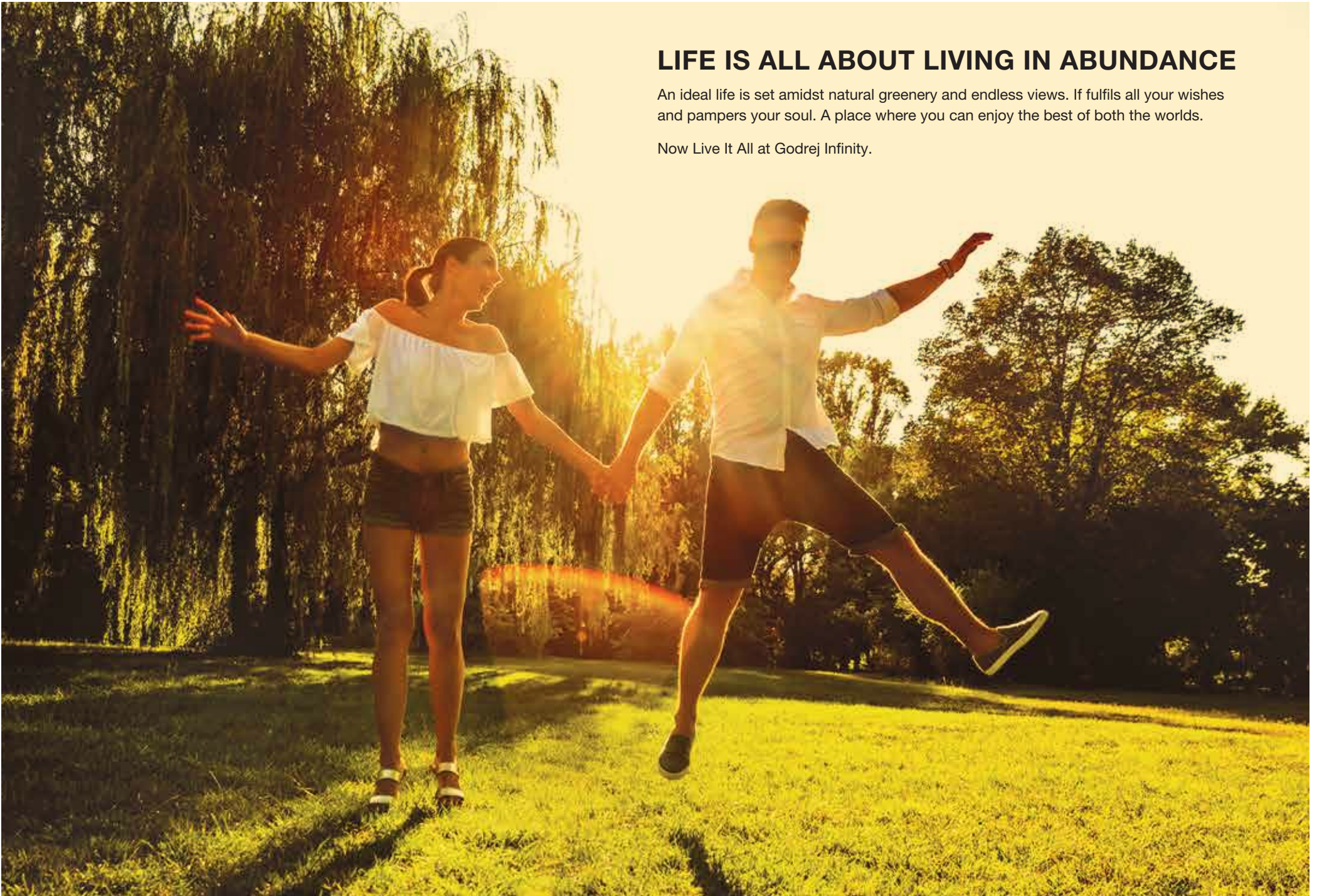
**OXFORD GROUP**  
A Promise!



## LIFE IS ALL ABOUT LIVING IN ABUNDANCE

An ideal life is set amidst natural greenery and endless views. It fulfills all your wishes and pampers your soul. A place where you can enjoy the best of both the worlds.

Now Live It All at Godrej Infinity.



WELCOME TO A PLACE WHERE YOU CAN **LIVE**  
**IT ALL**



Artist's impression of anticipated appearance. Not an actual site photograph

## GODREJ INFINITY AT A GLANCE



### BOUNDLESS CONVENIENCE

A strategic location that lets you reach anywhere in the city with ease



### ABUNDANT LIVING

- A residential community spread over 51906.11 sq.m.
  - Chosen by 800+ families as their dream home
- Premium 2 & 3 BHK homes
- IGBC Silver Pre-certification
  - More than 50% green & open spaces



### LIMITLESS LEISURE

- Contemporary clubhouse
- Sports facilities



### UNBOUNDED ASSOCIATION

- Exclusive Lifestyle Partners:  
Four Fountain Spa & club concierge services



**BOUNDLESS  
CONVENIENCE**

# WORK OR PLAY



Dedicate more time to yourself with seamless connectivity

# LOCATION MAP – KESHAVNAGAR, PUNE

A serene and growing locality in Pune, Keshavnagar promises excellent connectivity



- EDUCATIONAL INSTITUTES**
  - Orbis School – 1.5 km
  - Serra International Pre-school – 3.1 km
  - Eon Gyanankur School – 4.5 km
  - Pharmacy College – 5 km

- IT/COMMERCIAL**
  - Eon IT Park – 3.5 km
  - World Trade Centre – 3.5 km
  - Zensar IT Park – 3.5 km
  - Magarpatta IT Park – 3.5 km

- HOSPITAL**
  - Columbia Asia Hospital – 3 km
  - Rakshak Hospital – 5 km
  - Noble Hospital – 6 km
  - Sahyadri Hospital – 6 km

- SHOPPING MALL**
  - Amanora Town Centre – 3 km
  - Seasons Mall – 3 km
  - Nitesh Hub – 4.5 km
  - Inorbit Mall – 6.5 km
  - Phoenix Market City – 7 km

Sanctioned bridge on Mula Mutha river will connect Keshavnagar to Kharadi\*

- HOTELS**
  - Radisson Hotel – 3.5 km | Westin Hotel – 4.5 km

**PUNE RAILWAY STATION – 8.5 KM**

- PUNE INTERNATIONAL AIRPORT – 10.5 KM**
  - KHARADI – 3.5 km
  - MAGARPATTA CITY – 3.5 km
  - KALYANI NAGAR – 5 km
  - KOREGAON PARK – 5.5 km
  - HADAPSAR – 6 km

- Landmarks
- Hospital
- School / Colleges
- Hotel
- Mall
- Tech Parks / Companies
- Bridge
- Railway Station
- Temple



**ABUNDANT  
LIVING**



# LUXURY OR SERENITY

Joy of uninterrupted views from your well-appointed residence

# ENERGISE OR MEDITATE



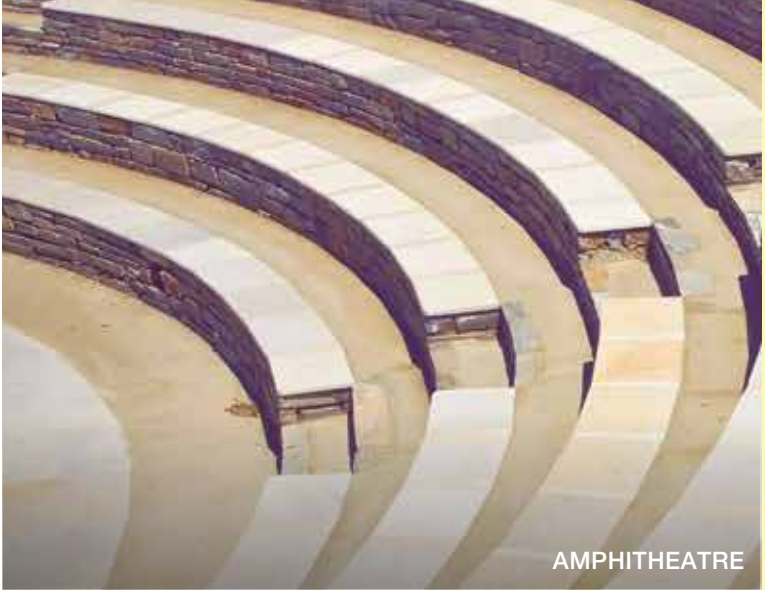
6 acres of open space for a host of activities

CENTRAL GREENS OVER 6480.36 SQ.M. **A HEALTHY**  
THAT INSPIRES **LIFE**



Artist's impression of anticipated appearance. Not an actual site photograph

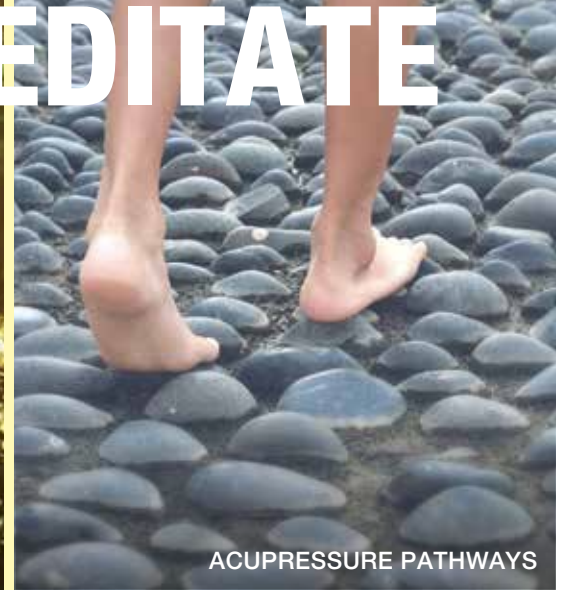
ALL THAT YOU NEED TO **ENERGISE**  
**OR MEDITATE**



AMPHITHEATRE



WATER BODIES



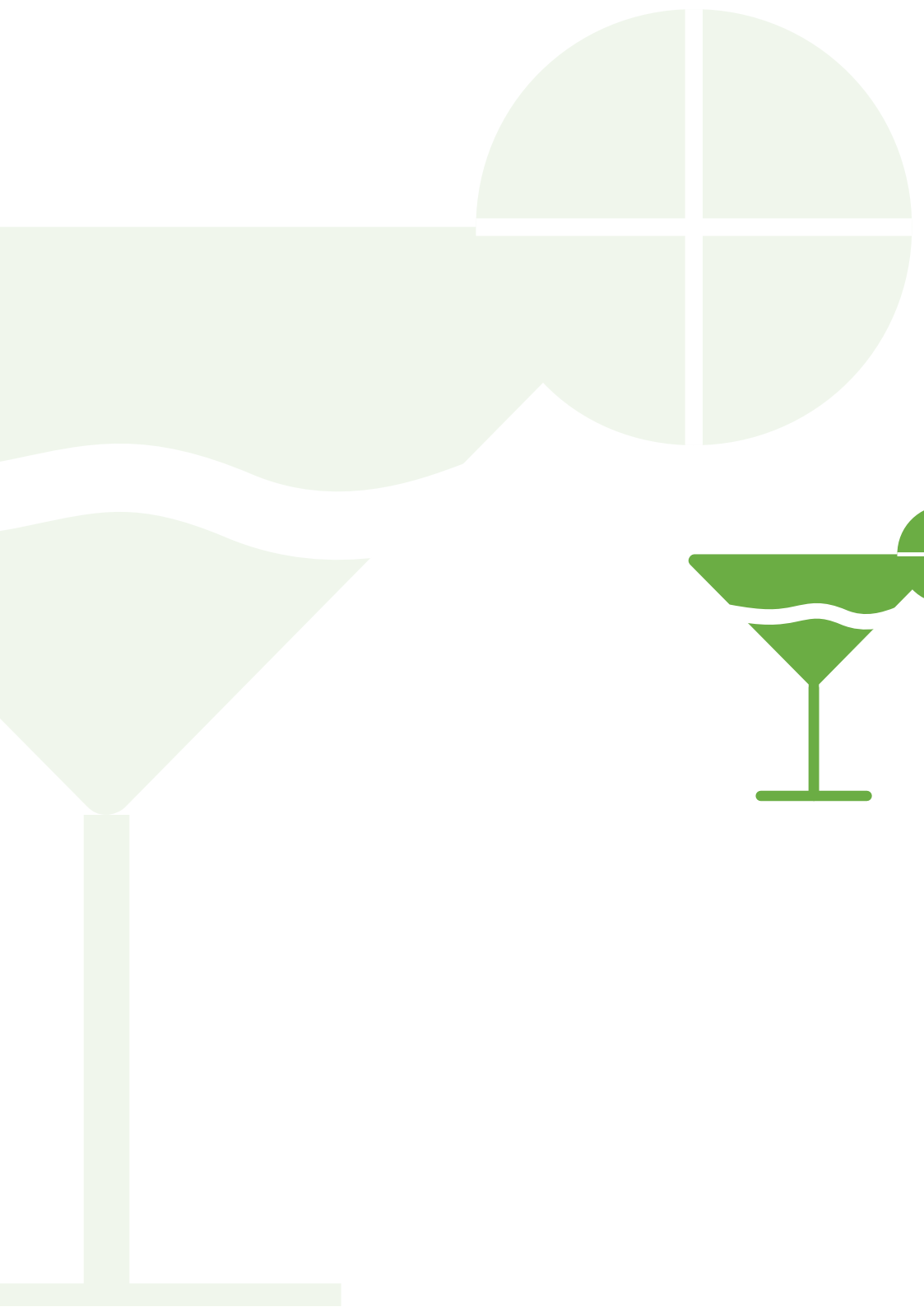
ACUPRESSURE PATHWAYS



JOGGING/WALKING TRACK



SENIOR CITIZEN'S AREA



**LIMITLESS  
LEISURE**

# REVITALISE OR SOCIALISE

A warm, indoor setting where a group of people are socializing. In the center, a young woman with long dark hair, wearing a brown jacket with a white fur collar, is smiling broadly and holding a white mug. Next to her, a young man with a beard and mustache, wearing a blue puffer vest over a grey sweater, is also smiling and holding a white mug. To the right, another man is partially visible, smiling. In the background, other people are visible, some with their hands raised in a celebratory gesture. The lighting is warm and golden, creating a cozy atmosphere.

Over 900 Sq. M. clubhouse, the largest in Keshav Nagar

FULLY-FURNISHED CLUBHOUSE WITH  
ALL FACILITIES

# UNDER ONE ROOF



Stock image. Shown purely for representative purpose.

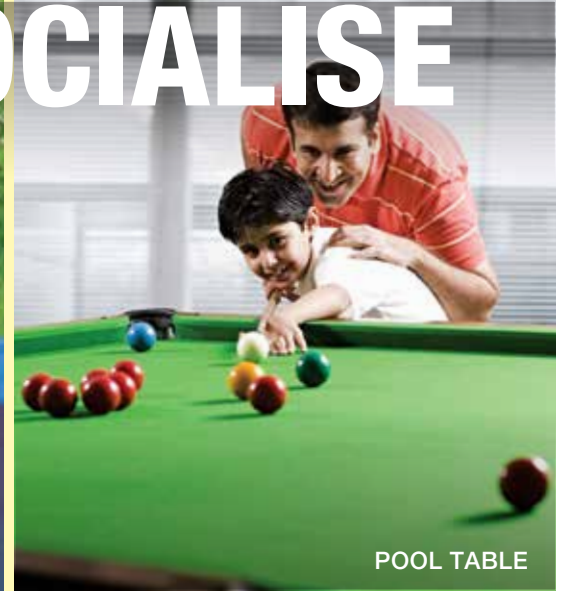
# AVENUES WHERE YOU CAN **REVITALISE** **OR SOCIALISE**



TABLE TENNIS



KIDS' PLAY AREA



POOL TABLE



YOGA & MEDITATION ZONE

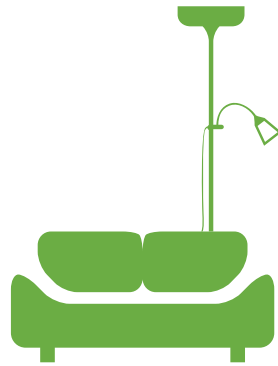


PARTY DECK



MULTIPURPOSE ROOM





**UNBOUNDED  
ASSOCIATION**

REJUVENATE OR INDULGE **LIVE**  
**IT ALL**



**FOUR FOUNTAINS DE-STRESS SPA\***  
Experience rebirth as you rejuvenate or indulge

\*Four Fountain De-stress Spa shall be available to the residents of Godrej Infinity at discounted rates and for a limited period from the date of possession. Stock image. Shown purely for representative purpose.

EXQUISITE GIFTS OR EXOTIC VACATIONS

**LIVE  
IT ALL**



**CLUB CONCIERGE SERVICE\***

Charter a plane or go yachting, surprise your beloved anytime you choose – think and it will be done. At Godrej Infinity, enjoy infinite privileges with Club Concierge and turn your every aspiration into an experience.

\*Club Concierge services shall be available to the residents of Godrej Infinity Signature Tower 1 and Tower 6 only and it shall be for a limited period from the date of possession. Stock image. Shown purely for representative purpose.



# MASTER LAYOUT PLAN

- |                                 |                        |
|---------------------------------|------------------------|
| 01 Clubhouse                    | 12 Kids' Pool          |
| 02 Outdoor Yoga Meditation Zone | 13 Party Lawn          |
| 03 Jogging Track/Walking Track  | 14 Pavilion            |
| 04 Children's Play Area         | 15 Water Body          |
| 05 Outdoor Sit-outs             | 16 Sand Pit            |
| 06 Tennis Court                 | 17 Party Deck          |
| 07 Acupressure Walkways         | 18 Community Greens    |
| 08 Senior Citizen's Zone        | 19 Convenient Shopping |
| 09 Cycle Track                  | 20 Outdoor Board Games |
| 10 Amphitheater                 | 21 Basket Ball Court   |
| 11 Swimming Pool                |                        |



# SPECIFICATIONS

## STRUCTURE

- Earthquake-resistant framed RCC structure in Shearwall Technology

## WALL FINISH

- Internal walls - Oil bound distemper finished internal walls
- External walls - Smooth finish with texture paint

## FLOORING

- Living/Dining - Vitrified flooring
- Master bedroom - Vitrified flooring
- Other bedrooms - Vitrified flooring
- Balconies - Anti-skid ceramic tiles
- Utility area - Anti-skid ceramic tiles
- Master washroom - Anti-skid ceramic tiles
- Other washrooms - Anti-skid ceramic tiles
- Kitchen - Vitrified flooring

## DOORS/WINDOWS

- Main entrance Flush door with veneer on one side
- Other doors Flush doors
- Windows UPVC windows with mosquito net

## WASHROOM

- Sanitary ware Parryware/Jaquar or equivalent
- C P fittings Jaquar or equivalent
- Wall cladding (Other washrooms) Glazed ceramic tiles
- Wall Cladding (Master washrooms) Glazed ceramic tiles

## ELECTRICALS

- Modular switches of Legrand/Anchor Roma or equivalent
- Cable TV, Telephone and AC points provision in all rooms

## KITCHEN

- Granite counter top with SS Sink
- Wall cladding with glazed tiles above counter

## SPECIAL FEATURES

- Modular kitchen cabinets under platform
- Video door phone
- RO water purifier
- Invertors for flats
- Piped gas connection
- Solar water heating provision

## CONFIGURATION

Configuration	Carpet Area (sq.m.)	Exclusive Area (sq.m.)	Total Flat Area (Carpet+Exclusive) (sq.m.)
2 BHK L	61.86 – 65.57	16.19 – 18.38	78.05 – 83.95
3 BHK	77.57 – 78.62	20.55 – 20.67	98.12 – 99.29
3 BHK L	87.62 – 95.14	23.22 – 23.86	110.84 - 119

# SUSTAINABLE **ECO-FRIENDLY** DEVELOPMENT



IGBC SILVER  
PRE-CERTIFICATION

---



RAINWATER  
WATER HARVESTING

---



SOLAR  
ENERGY

---



GREEN  
PLANTATION



PRESENTING

# OFFER<sup>\*</sup> OF THE YEAR



Rental Benefit  
Till Possession



Gold Voucher On  
Each Booking



No Clubhouse  
Charges\*



No Floor  
Rise



No MSEB  
Charges\*



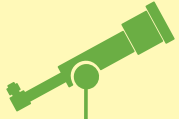
No Parking  
Charges\*



No  
PLC

\*Conditions apply - No MSEB cable & meter one-time installation charges; No charges for covered car parking; No one time clubhouse membership charges; All the offers are valid till 17<sup>th</sup> December, 2017. \*\*Ease of commute via the recently sanctioned Mula-Mutha Bridge between Kharadi and Keshav Nagar.

#Limited Edition Inventory for Vaastu Compliant Homes.



## SMART VISION

TO MAKE PUNE  
THE MOST LIVEABLE  
CITY IN INDIA

## PUNE - THE SMART CITY WITH A SMART LIFE

Pune, one of the major cities in Maharashtra has seen manifold growth in recent years. From a quiet city to a rapidly growing IT hub of Western India, Pune has transformed itself into the most lucrative destination when it comes to real estate and investment.

### THE ADDRESS OF A GROWING FUTURE



2<sup>ND</sup> LARGEST CITY  
IN THE STATE OF  
MAHARASHTRA\*



2<sup>ND</sup> SAFEST  
CITY  
IN INDIA\*



RANKS 2<sup>ND</sup>  
IN INDIA ON  
QUALITY OF LIFE\*



7<sup>TH</sup> LARGEST  
METROPOLIS  
IN INDIA\*



4<sup>TH</sup> BEST CITY  
IN INDIA FOR  
BUSINESS\*



FAMOUSLY KNOWN AS OXFORD OF  
THE EAST OWING TO THE EDUCATIONAL  
INFRASTRUCTURE



6<sup>TH</sup> HIGHEST  
PER CAPITA  
INCOME IN INDIA\*



# SOURCES

2<sup>ND</sup> LARGEST CITY IN THE STATE OF MAHARASHTRA

(Source: <http://www.worldlistmania.com/list-largest-cities-maharashtra/>)

2<sup>ND</sup> SAFEST CITY IN INDIA

(Source: [http://www.business-standard.com/article/current-affairs/ahmedabad-safest-city-in-india-for-women-travellers-114030600519\\_1.html](http://www.business-standard.com/article/current-affairs/ahmedabad-safest-city-in-india-for-women-travellers-114030600519_1.html))

RANKS 2<sup>ND</sup> IN INDIA ON QUALITY OF LIFE

(Source: <http://www.siliconindia.com/news/general/10-Best-Indian-Cities-to-Live-In-nid-144909-cid-1.html>)

4<sup>TH</sup> BEST CITY IN INDIA FOR BUSINESS

(Source: <http://www.rediff.com/money/slide-show/slide-show-1-indias-21-best-cities-for-business-bangalore-tops-/20131023.htm#4>)

6<sup>TH</sup> HIGHEST PER CAPITA INCOME IN INDIA

7<sup>TH</sup> LARGEST METROPOLIS IN INDIA

(Source: <http://worldpopulationreview.com/world-cities/pune-population/>)

# GODREJ PROPERTIES IN PUNE

Godrej Properties in Pune began its journey a decade ago aiming at redefining the real estate scenario. Since inception, an array of legacy projects have been delivered thereby, establishing trust and credibility.

## OTHER ONGOING PROJECTS - RESIDENTIAL



Actual Photograph

**GODREJ HORIZON**  
NIBM ANNEX, PUNE



Artist's Impression. Not an actual site photograph

**GODREJ PRANA**  
UNDRI, PUNE



Artist's Impression. Not an actual site photograph

**GODREJ GREENS**  
UNDRI, PUNE



Artist's Impression. Not an actual site photograph

**GODREJ 24**  
PHASE-I, HINJAWADI

## COMPLETED PROJECTS - COMMERCIAL



**GODREJ MILLENNIUM**  
KOREGAON PARK, PUNE



**GODREJ CASTLEMAINE**  
BUND GARDEN, PUNE



**GODREJ ETERNIA**  
SHIVAJI NAGAR, PUNE

## COMPLETED PROJECTS - RESIDENTIAL



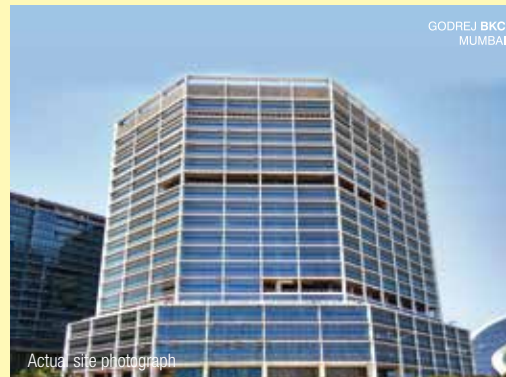
**GODREJ SHERWOOD**  
SHIVAJI NAGAR, PUNE

# TWO DECADES OF EXCELLENCE

Godrej Properties brings the Godrej Group philosophy of innovation, sustainability and excellence to the real estate industry. Each Godrej Properties development combines a 120-year legacy of excellence and trust with a commitment to cutting-edge design and technology. Godrej Properties is currently developing residential, commercial and township projects spread across approximately 13.16 million square meters (134.69 million square feet) in 12 cities.

In the last five years, Godrej Properties has received over 200 awards and recognitions, including the "Premium Real Estate Company of the Year" at the Corporate LiveWire Awards 2017, the "Professional Excellence in Real Estate" at the ABP News Real Estate Awards 2016, the "Real Estate Company of the Year" at the Construction Week India Awards 2015, the "Most Reliable Builder" at the CNBC AWAAZ Real Estate Awards 2014, the "Innovation Leader in Real Estate" award at the NDTV Property Awards 2014, and the "Popular Choice - Developer of the Year" award at the ET NOW Awards in 2013.

- Established in 1990
- India's first ISO certified real estate developer
- Projects in 12 cities across India
- Prime locations, good value, excellent construction, efficient support
- Collaboration with outstanding associates



## RESIDENTIAL PROJECTS

Godrej Garden City	Ahmedabad
Godrej 17	Bengaluru
Godrej Woodsman Estate	Bengaluru
Godrej Platinum	Bengaluru
Godrej Gold County	Bengaluru
Godrej E-City	Bengaluru
Godrej United	Bengaluru
Godrej Palm Grove	Chennai
Godrej Azure	Chennai
Godrej Frontier	Gurgaon
Godrej Icon	Gurgaon
Godrej Summit	Gurgaon
Godrej Oasis	Gurgaon
Godrej Aria	Gurgaon
Godrej Prakriti	Kolkata
Godrej Platinum	Kolkata
Godrej Alpine	Mangalore
Godrej Bayview	Mumbai
Planet Godrej	Mumbai
Godrej Platinum	Mumbai
Godrej Riverside	Mumbai
Godrej Serenity	Mumbai
Godrej Waldorf	Mumbai
Godrej Edenwoods	Mumbai
Godrej Hill	Mumbai
Godrej Central	Mumbai
Godrej Prime	Mumbai
Godrej Anandam	Nagpur
Godrej Horizon	Pune
Godrej Prana	Pune
Godrej Greens	Pune
Godrej 24	Pune
Godrej Sherwood	Pune

## COMMERCIAL PROJECTS

Godrej Eterna	Chandigarh
Godrej Genesis	Kolkata
Godrej Waterside	Kolkata
Godrej Coliseum	Mumbai
Godrej BKC	Mumbai
The Trees	Mumbai
Godrej Castlemaine	Pune
Godrej Eterna	Pune
Godrej Millennium	Pune

MahaRERA Registration No. P52100003129 available at website: <http://maharera.mahaonline.gov.in>

All images shown are artist impressions and stock images. This printed material is in respect of an ongoing project and does not constitute an offer, an invitation to offer and /or commitment of any nature between the recipient and us. The designs, dimensions, cost, facilities, plans, furniture, accessories, paintings, items, electronic goods, additional fittings/fixtures, decorative items, false ceiling including finishing materials, specifications, shades, sizes, colour of the finishing materials and other details shown in the image are only indicative in nature and are only for the purpose of illustrating/indicating a possible layout and do not form part of the standard specifications/amenities/services to be provided. Proposed amenities are subject to various approval/s, sanction/s, consent/s from relevant authorities and are subject to change. In the event such proposed amenities are not available due to non-feasibility or approvals then we do not assume any liability or responsibility for the same and customers shall have no claims against us whatsoever. All specifications of the flat shall be as per the final agreement between the parties. Recipients are advised to use their discretion in relying on the information/amenities described/shown therein.